



## New Brunswick College of Pharmacists Ordre des pharmaciens du Nouveau-Brunswick

To ensure document is current, refer to electronic copy. [www.nbpharmacists.ca](http://www.nbpharmacists.ca)

### Returning to Active Practice: Direct Client Care Register

This algorithm (next page) does not apply to students or registrants on a conditional register such as International Pharmacy Graduates (IPG). For definitions of registration categories, please consult the *NB Pharmacy Act, 2014* and Regulations (available on the College website). All applications must meet administrative requirements for registration and licensure. For a complete list of these requirements, please consult [the College website](http://www.nbpharmacists.ca).

Registration Committee recommendations may include (but are not limited to): Completing a formal CCAPP or ACPE-accredited program and/or PEBC Examinations  
Guidance regarding Continuing Professional Development Portfolios can be found on the [College website](http://www.nbpharmacists.ca):

All candidates must certify completion of an orientation program under supervision of a member before practicing independently.

#### Abbreviations:

DR/R= Deputy Registrar/Registrar

RT= Registrations Team

DCC= Direct Client Care

PEBC= Pharmacy Examining Board of Canada

CPDU = Continuous Professional Development units

JE= Jurisprudence Exam

IAEP= Independent Assessment at Entry to Practice

PRA=Pharmacy Regulatory Authority

CCAPP= Canadian Council for Accreditation of Pharmacy Programs

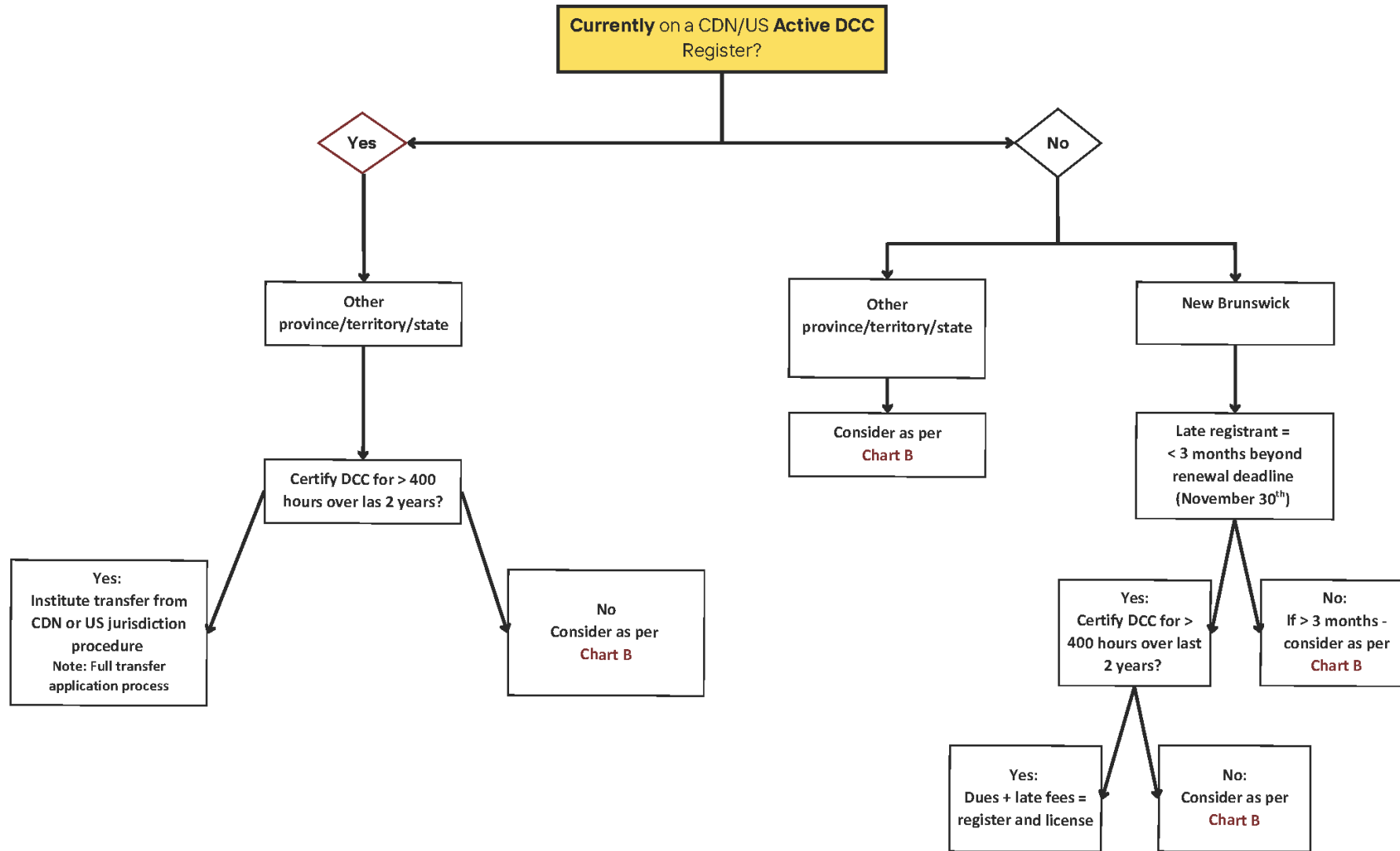
ACPE= American Council for Pharmacy Education

NB=New Brunswick

TAPT= Tool for Assessment of Pharmacy Technicians

\* Cornerstone documents: *NB Pharmacy Act, 2014*, Regulations, Code of Ethics and Standards of Practice

College guidance: Practice Directives, Position Statements, Commentaries, emails and newsletters/bulletins of the College



## Chart B: Not currently on CDN/US DCC Register

