



New Brunswick College of Pharmacists Ordre des pharmaciens du Nouveau-Brunswick

To ensure document is current, refer to electronic copy. www.nbpharmacists.ca

Returning to Active Practice: Direct Client Care Register

This algorithm (next page) does not apply to students or conditional registrants such as International Pharmacy Graduates (IPG). For definitions of registration categories, please consult the Pharmacy Act and Regulations (available on NBCP website [LINK](#)). All applications must meet administrative requirements for registration and licensure. For a complete listing of these requirements, please consult NBCP website [LINK](#).

Registration Committee recommendations may include (but not limited to): Completing formal CCAPP or ACPE-accredited program and/or PEBC Examinations

Guidance regarding Continuing Professional Development Portfolios can be found at the Ontario College of Pharmacists: LINKS <http://www.ocpinfo.com/practice-education/qa-program/learning-portfolio/faqs/> and <http://www.ocpinfo.com/library/forms/download/Learning%20Portfolio.doc>

All candidates must certify completion of an orientation program under supervision of a member before practicing independently.

Abbreviations:

DR= Deputy Registrar

COORD= Coordinator

DCC= Direct Client Care

PEBC= Pharmacy Examining Board of Canada

CEU= Continuing Education Units

JP= Jurisprudence

IAEP= Independent Assessment at Entry to Practice

PRA= Provincial Regulatory Authority

CCAPP= Canadian Council for Accreditation of Pharmacy Programs

ACPE= American Council for Pharmacy Education

NB= New Brunswick

* Cornerstone documents: Act, Regulations, Code of Ethics and Standards of Practice

NBCP guidances: Practice Directives, Position Statements, Commentaries, E-mails and Newsletters/Bulletins of the College

Request: Transfer/Reinstitution of Active-DCC licence

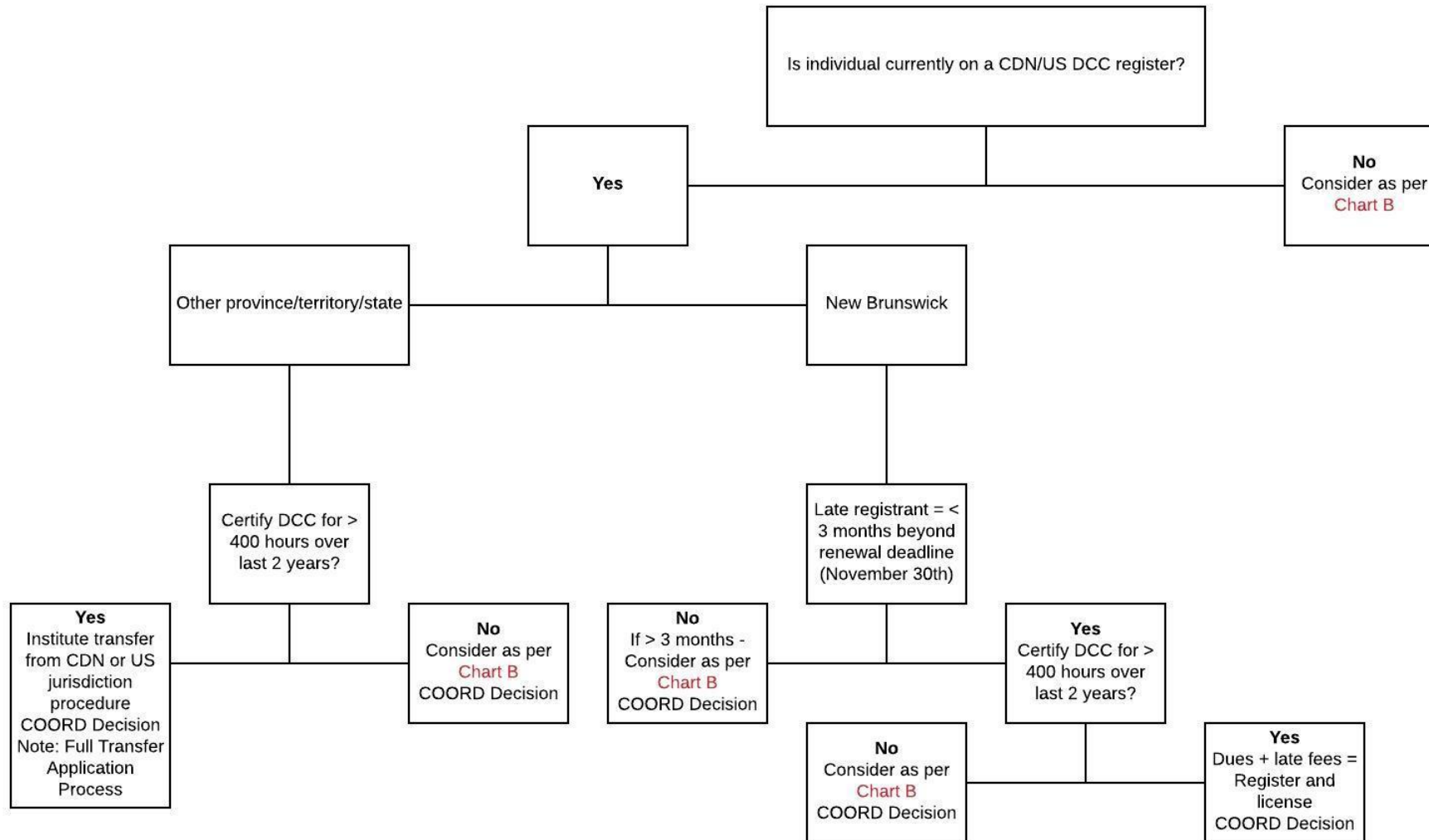


Chart B: Currently not on CDN/US DCC Register

